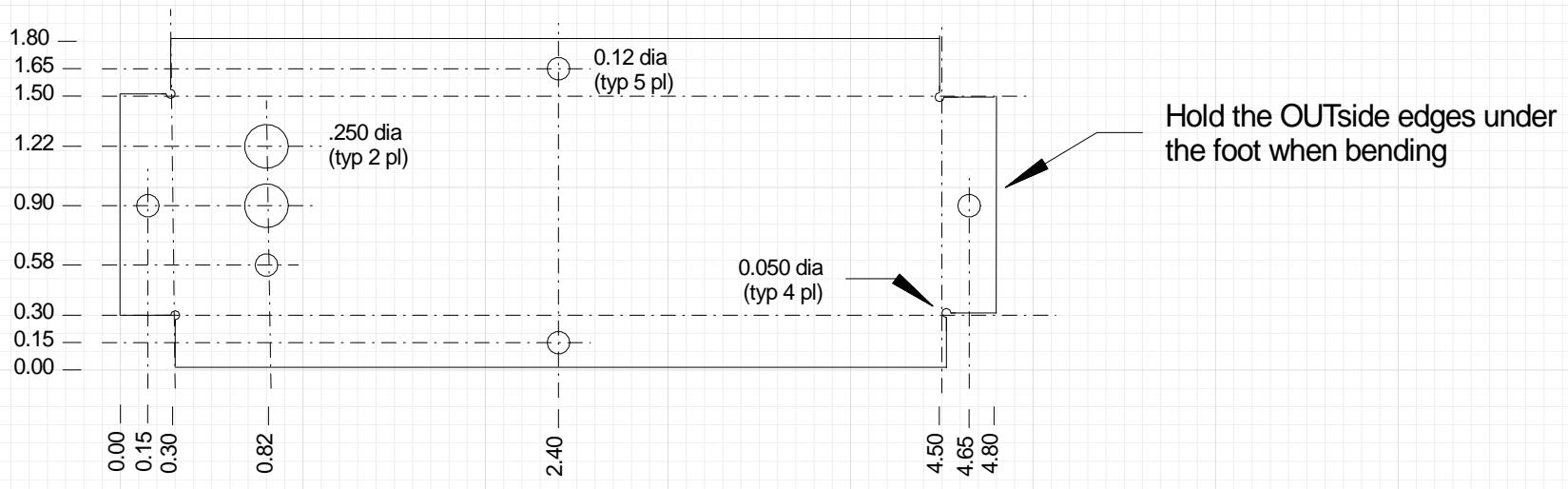
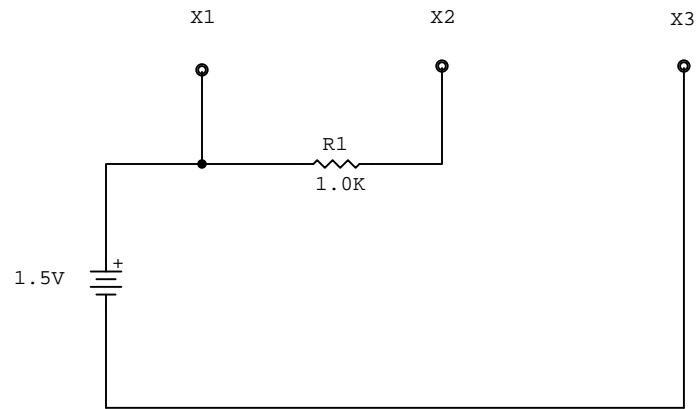


*Jim Wein*  
22 Sep 2016  
MECH-01



Prototype sketch only  
***Not for production***

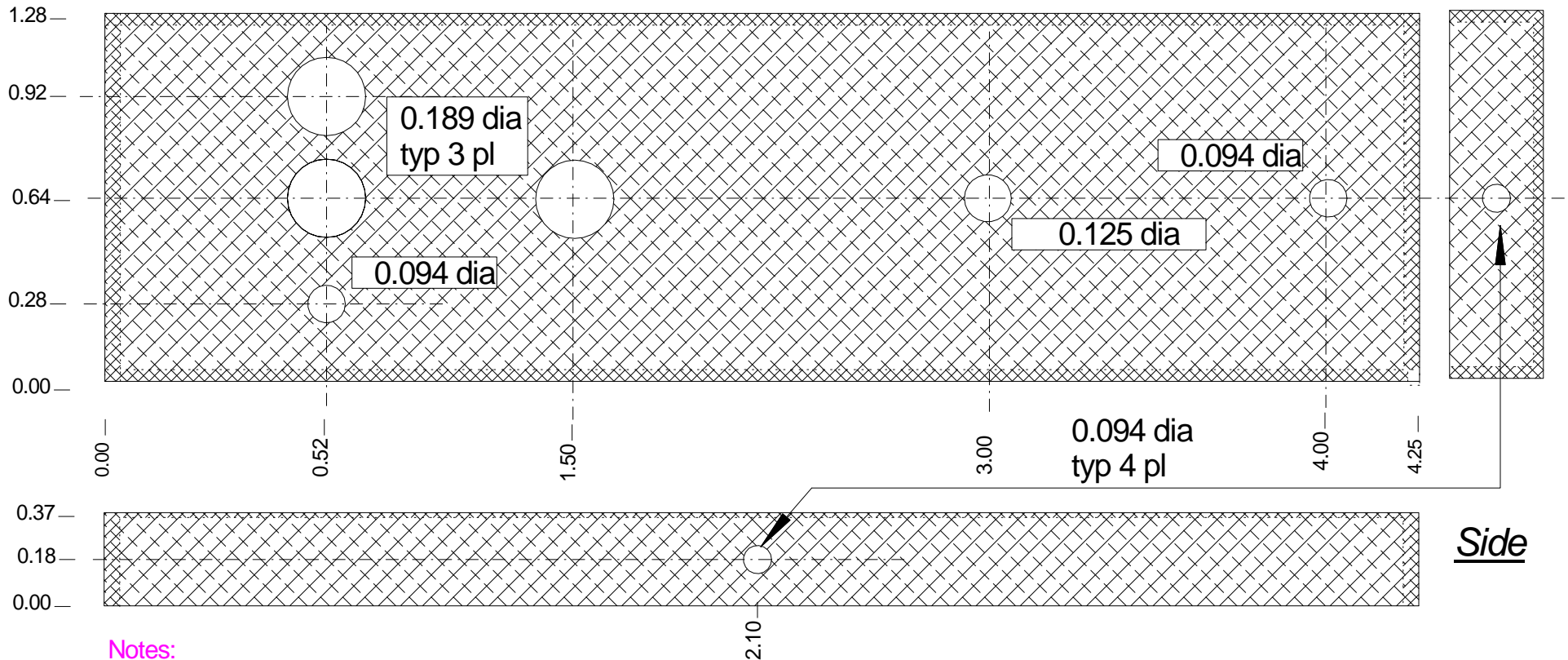
Scale:	Approved by:	Drawn by:
Date:		Rev:
<b>RST Engineering</b> 13993 Downwind Court Grass Valley CA 95945 530.272.2203 tech@rst-engr.com		Drawing # 000-0000 sheet 0 of 0



Multimeter Tester	
Rev A	ID 602-5802
Date: 19 Aug '17	Page: 1 of 1

Top

Front



Notes:

1. Mat'l Al Aly 5052H32
2. Remove all sharp edges.
3. **Drill/punch 4 0.094" holes using cover as template.**
4. MIL-TDD-41
5. Rev B: Added view definitions, changed 1.50 to 2.10 dim on front., changed 0.30 dim & 0.15 on front to 0.37 & 0.18, added 0.12 hole on top at 0.64 x 4.00.
6. Rev C: Changed 3 holes from 0.25 to 0.189 dia. Changed 6 holes to 0.094 dia. Added 0.125 hole at c/l x 3.00"

Multimeter Calibrator  
Chassis Drawing

Scale: 2:1

Date: 19 Aug '17

Drawn by: OWJ

Rev: C

Approved by:

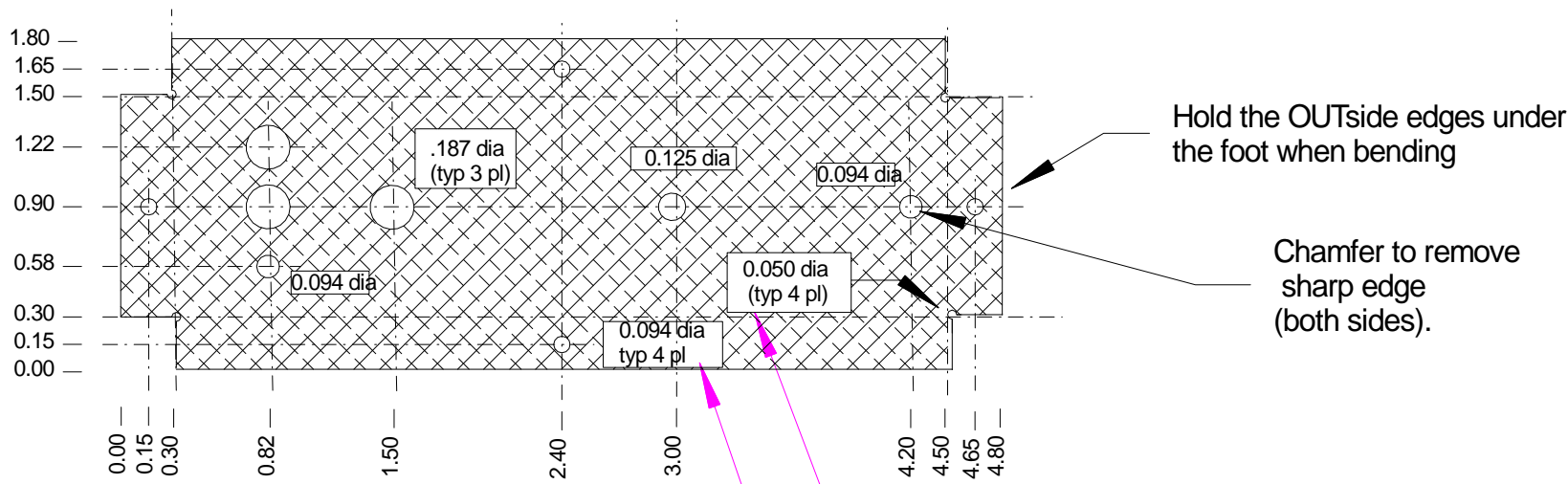


**RST Engineering**

13993 Downwind Ct.  
530.272.2203


Grass Valley CA 95945  
tech@rst-engr.com

Drawing  
# 6622-2203  
Sheet 1 of 4



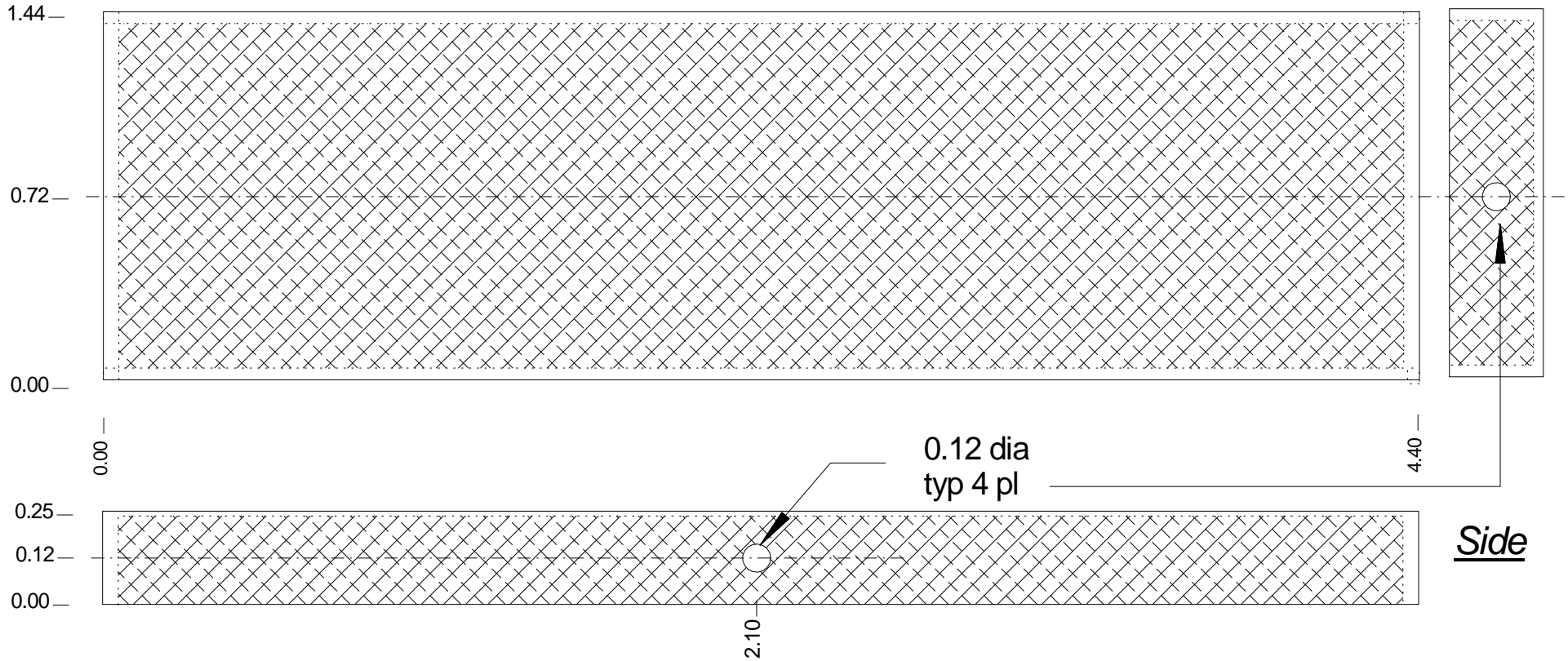
**NOTES:**

- 1. Mat'l Al Aly 5052H32 0.050 thk
- 2. **DO NOT DRILL THESE HOLES NOW.**  
**Punch 0.094 dia holes using cover as template.**
- 3. If 0.050 punch is not available, any punch < 0.098 can be used.
- 4. If 0.050 punch is not available, any punch < 0.065 can be used.
- 5. Rev B: Added notes 3 and 4. Added 0.12 hole at 0.90 x 4.20

<b>Voltmeter Calibrator Chassis Bend Drawing</b>		
Scale: 1:1	Approved by:	Drawn by: OWJ
Date: 19 Aug '17		Rev: C
<b>RST Engineering</b> 13993 Downwind Court Grass Valley CA 95945 530.272.2203 tech@rst-engr.com		Drawing # 6622-2203 sheet 2 of 4

Top

Front



Notes:

- 1. Mat'l Al Aly 5052H32
- 2. Remove all sharp edges.
- 3. MIL-TDD-41

Multimeter Calibrator  
Cover Drawing

Scale: 2:1

Date: 20 Oct '16

Drawn by: OWJ

Rev: A

Approved by:

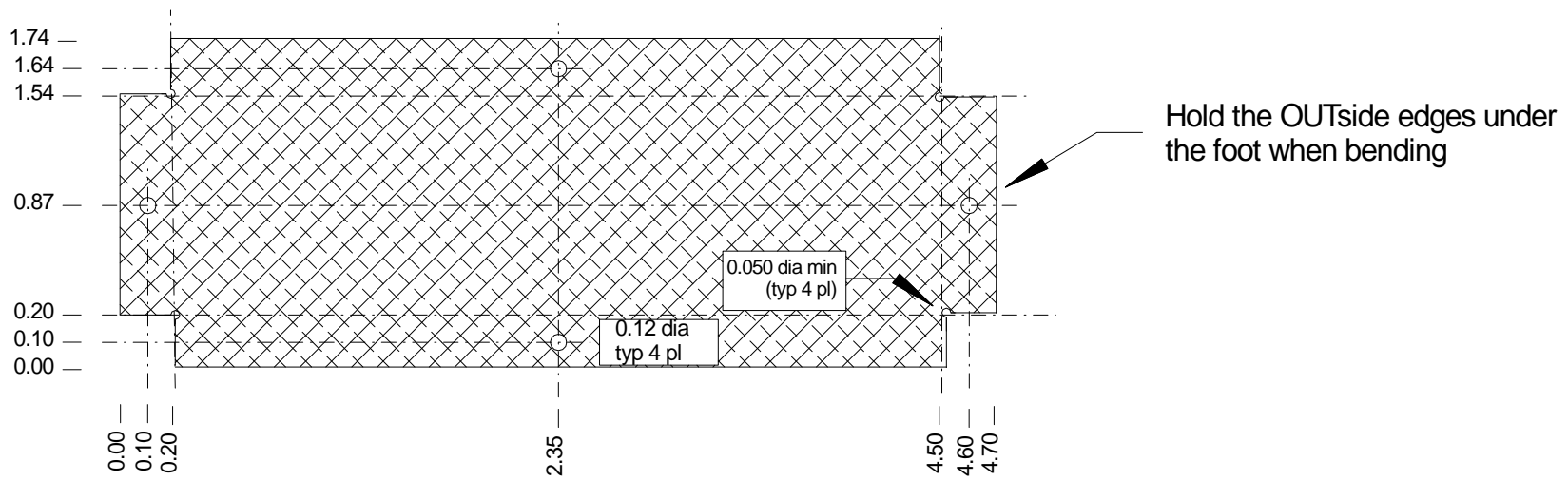


**RST Engineering**

13993 Downwind Ct.  
530.272.2203

Grass Valley CA 95945  
tech@rst-engr.com

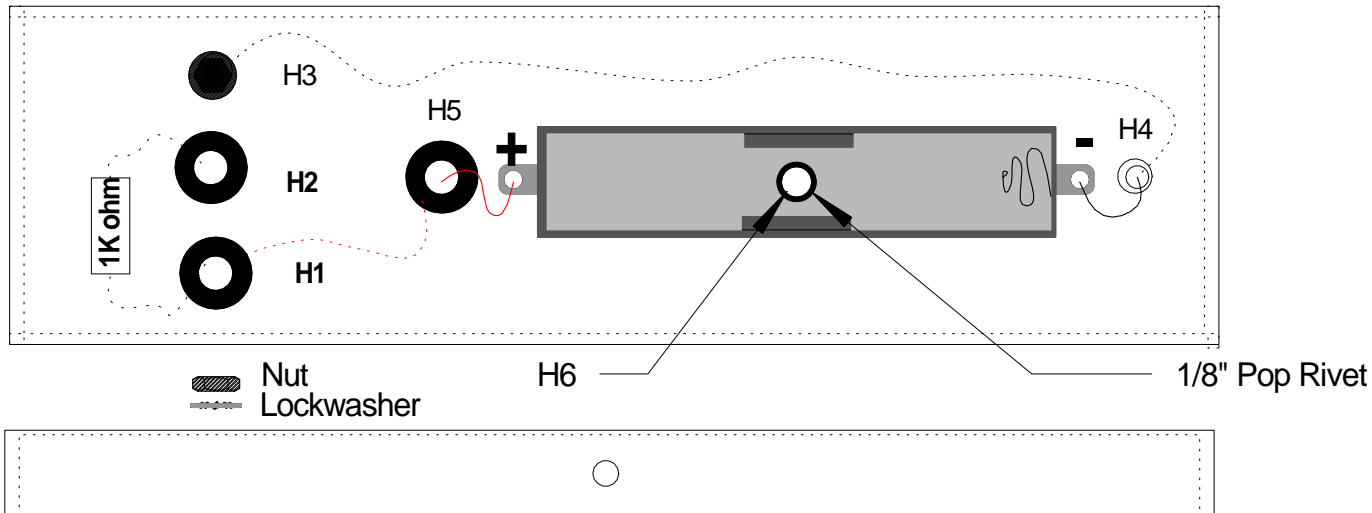
Drawing  
# 6622-2203  
Sheet 3 of 4



**NOTES:**

- 1. Mat'l Al Aly 5052H32 0.050 thk

<b>Voltmeter Calibrator Cover Bend Drawing</b>		
Scale: 1:1	Approved by:	Drawn by: OWJ
Date: 20 Oct '16		Rev: A
<b>RST Engineering</b> 13993 Downwind Court Grass Valley CA 95945 530.272.2203 tech@rst-engr.com		Drawing # 6622-2203 sheet 4 of 4



### Assembly Instructions

1. Hold the battery clip onto the top of the chassis with your finger on a line with and halfway between holes H4 and H5. Using a pencil or a scribe, mark H6 onto the backside of the battery clip. Drill a 1/8" hole into the battery clip from the backside of the clip at H6. On the top (inside) of the clip use a large drill as a countersink for clearance of the top of a 1/8" pop rivet. Pop rivet the battery clip to the top of the chassis.
2. Install a 3/16" rubber grommet into holes H1, H2, and H5.
3. Install a 2-56 machine screw with solder lug through holes H1, H2, and H3. Point the solder lug to the battery holder side of the chassis. On the top of the chassis use a lockwasher and nut to secure the screw.
4. Connect a black wire from the negative terminal of the battery holder to the solder lug at hole H3.
5. Connect a 1k ohm resistor between the solder lug at hole H1 and H2. Solder ONLY the H2 end of the resistor to the solder lug.
6. Connect a red wire from the positive terminal of the battery holder to the solder lug at hole H1. Solder both the wire and the resistor lead to this solder lug.



