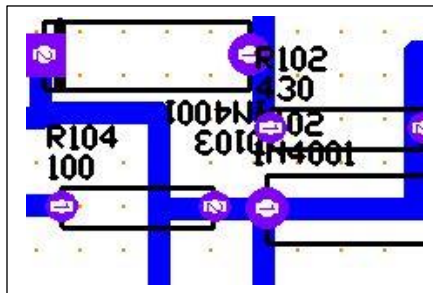


MECH-14 PCB LAYOUT COMMON MISTAKES

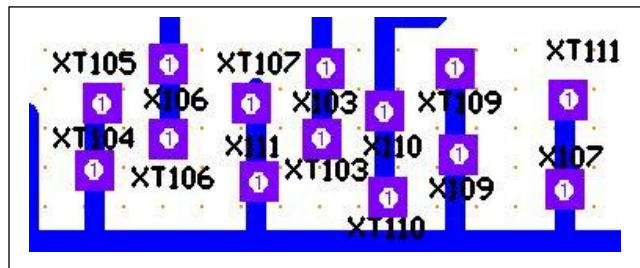
1. File names that are not in correct format. The proper format for a schematic is 1234-5801.ckt and the proper format for a board is 1234-6801.pcb . (1234 is the student's 4-digit identifier.) These are examples of unacceptable file names:

- a. 1234-5801 final format.ckt
- b. 1234-5801 final.ckt
1234-5801 the one I did last week.ckt
The one that didn't look good.ckt
This one is a little better.ckt
- c. 6622-5801.ckt (6622 is the instructor's sample 4-digit identifier)

2. Top overlay legends impossible to figure out:



3. The X and XT holes need to be adjacent to one another:



(To Be Continued)